



Important Safety Notice

SUBJECT: Cub Cadet PRO Z 500 (Z5 152) and PRO Z 700 (Z7 183) sold in Great Britain: Corrective Action and Instructions to Stop Use

We are contacting you because our records indicate that you may have purchased a **Cub Cadet PRO Z 500 (Z5 152) or PRO Z 700 (Z7 183)** lawnmower. A representative image of the product is below.



Kawasaki Motors Corp., U.S.A. has determined that a product safety hazard may exist with the KM-21066-0785 voltage regulator on the Kawasaki engine fitted to your lawnmower. This may result in a fire with a potential for serious personal injury or property damage. To ensure your safety, the negative battery cable must be disconnected and secured away from the negative battery terminal.

We are implementing a corrective action for these products to address the Safety Notice raised by Kawasaki.

The following lawnmowers sold in Great Britain are affected:

- **Cub Cadet PRO Z 500 (Z5 152) 53BIHJUV603**
- **Cub Cadet PRO Z 700 (Z7 183) 53BIHKUY603**

The Lawnmowers are yellow and black in colour and carry the Cub Cadet logo.

Only models manufactured between 1st April 2021 and 15 December 2023 are affected.



The model number and date of manufacture is printed on the identification plate visible in front of or behind the seat. The model number will appear in the upper left-hand corner of the label under the heading “Model Number”. The month and year of manufacture will appear in the center of the label under the heading “DOM”. See the images below for the plate location.

Model Plate Location



Model Plate Location



If you cannot locate the plate and/or model number, please contact your Dealer for assistance.



If your lawnmower is affected, **STOP USING IT IMMEDIATELY** and take the following steps:

1. **Disconnect the negative battery cable and secure it away from the negative battery terminal.**
Instructions for how to do this are included below. If you feel uncomfortable disconnecting the battery, please immediately contact your dealer to make arrangements to have the dealer disconnect the battery for you. Your dealer will disconnect the battery at no charge to you.
2. **Contact your dealer to arrange a repair.** The repair will involve replacement of the affected voltage regulator.

We apologize for any inconvenience this may cause you and appreciate your cooperation in this matter. Your safety is our primary concern.

Yours sincerely,

[MTD]



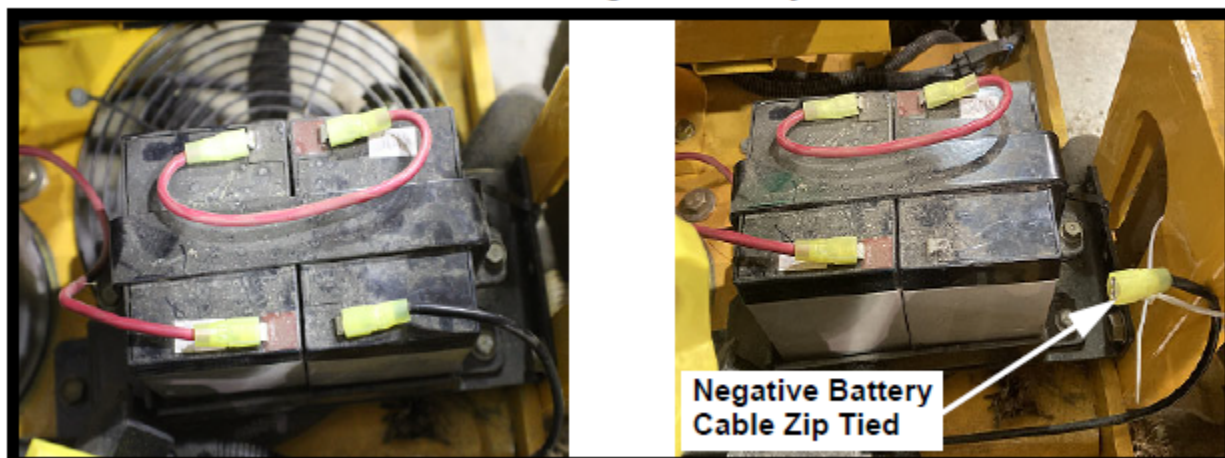
Instructions for Disconnecting Negative Battery Cable

1. Locate the battery and the black negative battery cable.
2. Remove the bolt and nut securing the negative battery cable to the negative battery terminal using the appropriate size wrenches.

Note: Take care not to touch the positive battery terminal with the wrenches, to prevent severe arcing and possible damage to the battery and or possible personal injury.

3. Next, secure the negative battery cable with a zip-tie away from the terminal as shown below.

PRO-Z 500, 700, 900 Model Negative Battery Cable Disconnect



If you need assistance or instruction with disconnecting the battery, please contact your dealer. If you feel uncomfortable disconnecting the battery, please immediately contact your dealer to make arrangements to have the dealer disconnect the battery for you. Your dealer will disconnect the battery at no charge to you.